



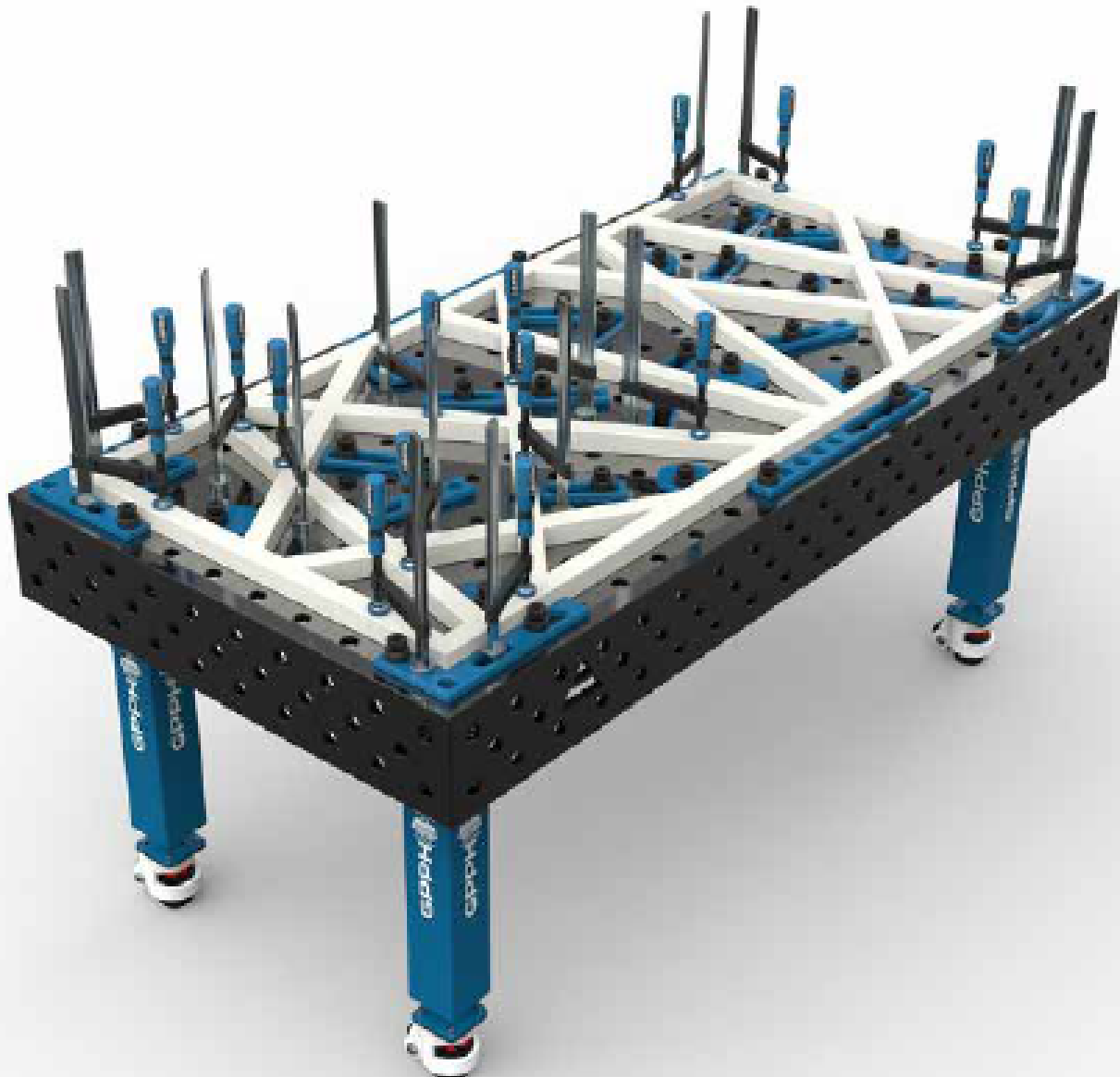
Van Maele Benelux N.V. / S.A.

Industriepark Zuid (zoneD3) - Tenhovestraat 22 - 8700 Tiel (België) • Tel.: +32 (0) 51 42 78 00
vanmaelebenelux.be • info@vanmaelebenelux.be



GPPH PRODUCTS OFFER

GET THE ADVANTAGE
OF GPPH PRODUCTS
BY MAKING PRECISE
CONSTRUCTIONS IN
A MUCH SHORTER TIME!



We think outside the box, and the results are easily seen in our creative solutions. We believe that everything we do challenges the "status quo." We change the world by helping other companies to become stronger. It just so happens that we produce excellent welding tools, which are not only user-friendly but also beautifully designed. Our mutual respect and pursuit of the highest goals result in cooperation with the best specialists in the industry around the world.

PROFESSIONAL APPROACH TO PRECISION WELDING

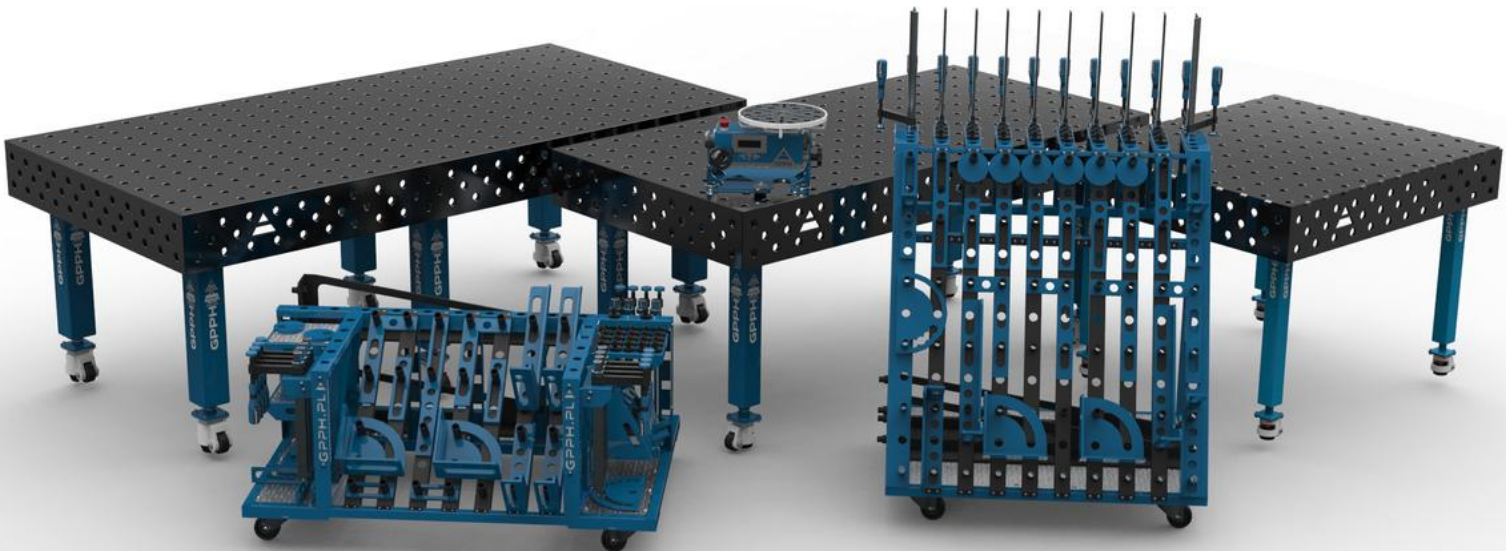
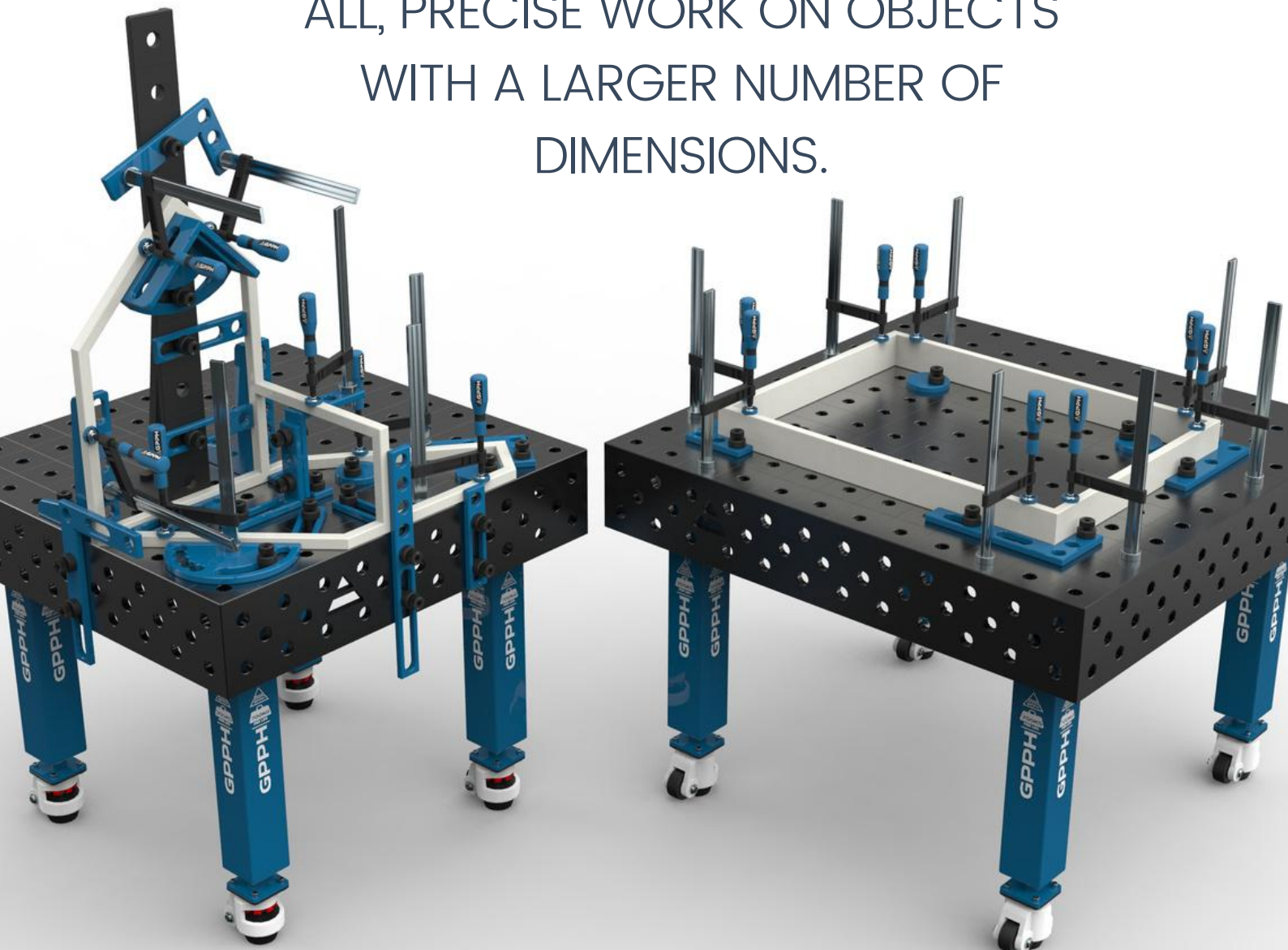


TABLE OF CONTENTS

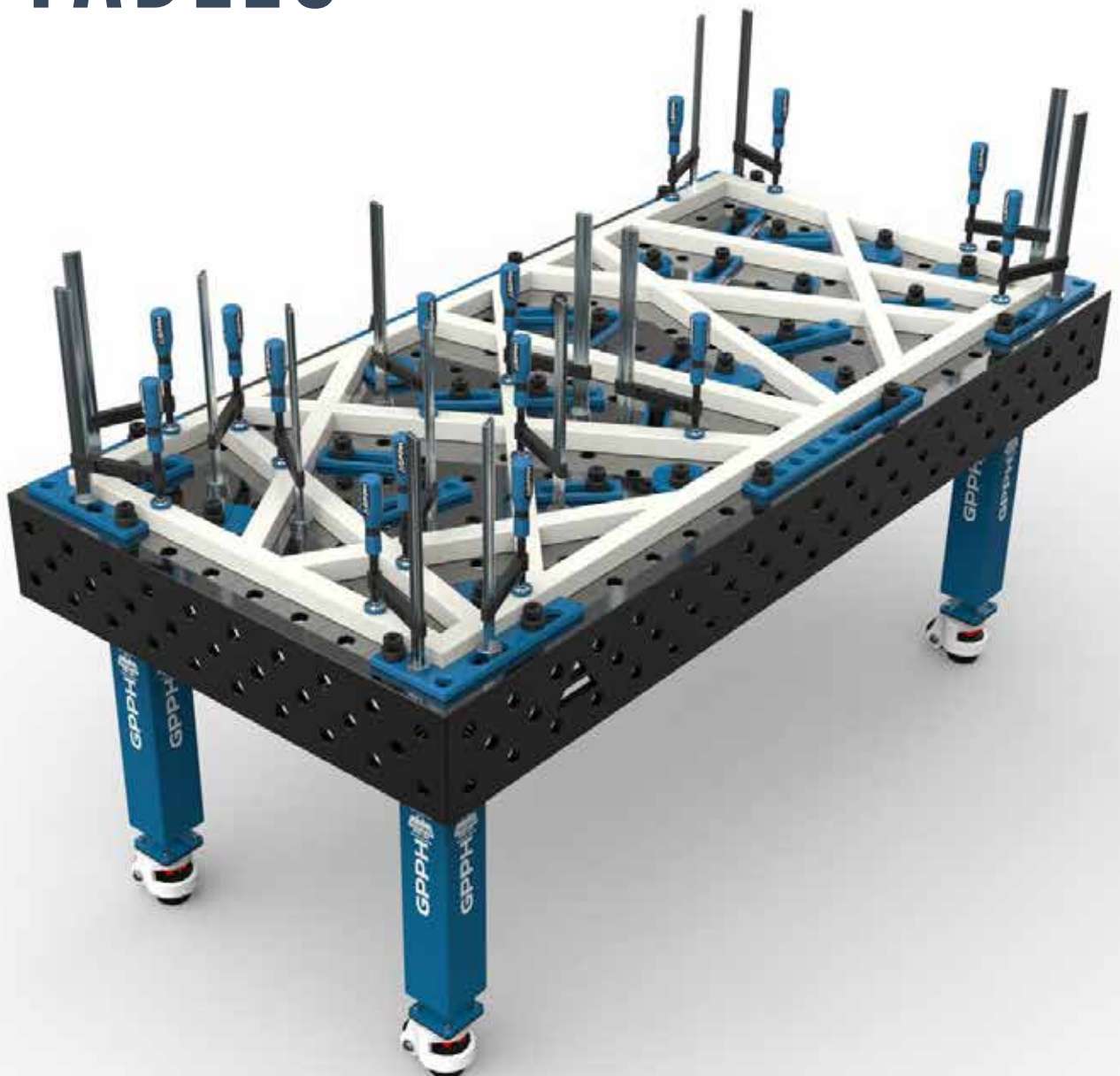
1. Traditional Welding Tables PRO	5
◦ Technical parameters	6
◦ Dimensions of Traditional Welding Tables PRO	7
2. Tooling for Traditional Welding Tables PRO	12
3. Toolkit proposal PRO	16
◦ Toolkit PRO no. 1	17
◦ Toolkit PRO no. 2	18
◦ Toolkit PRO no. 3	19
◦ Toolkit PRO no. 4	20
4. Traditional Welding Tables PLUS	21
◦ Technical parameters	22
◦ Dimensions of Traditional Welding Tables PLUS	23
5. Tooling for Traditional Welding Tables PLUS	28
6. Toolkit proposal PLUS	32
◦ Toolkit PLUS no. 1	33
◦ Toolkit PLUS no. 2	34
◦ Toolkit PLUS no. 3	35
◦ Toolkit PLUS no. 4	36
7. Traditional Welding Tables ECO	37
◦ Technical parameters	38
◦ Dimensions of Traditional Welding Tables ECO	39
8. Tooling for Traditional Welding Tables ECO	41
9. Toolkit proposal ECO	45
◦ Toolkit ECO no. 1	46
◦ Toolkit ECO no. 2	47
◦ Toolkit ECO no. 3	48
◦ Toolkit ECO no. 4	49
10. Greater mobility of the GPPH Welding Table - Legs on a wheel!	50
12. Additional equipment for Traditional Welding Tables GPPH	51
◦ Tools and portable tooling shelves	52
◦ GPPH Tool Trolley	56

WORK SMARTER, NOT HARDER

WELDING TABLE PROVIDES FAST AND ERROR-FREE OPTIONS FOR MACHINING A SIMPLE 2D-CONSTRUCTION (E.G. BUILDING OF RAILINGS), BUT ABOVE ALL, PRECISE WORK ON OBJECTS WITH A LARGER NUMBER OF DIMENSIONS.

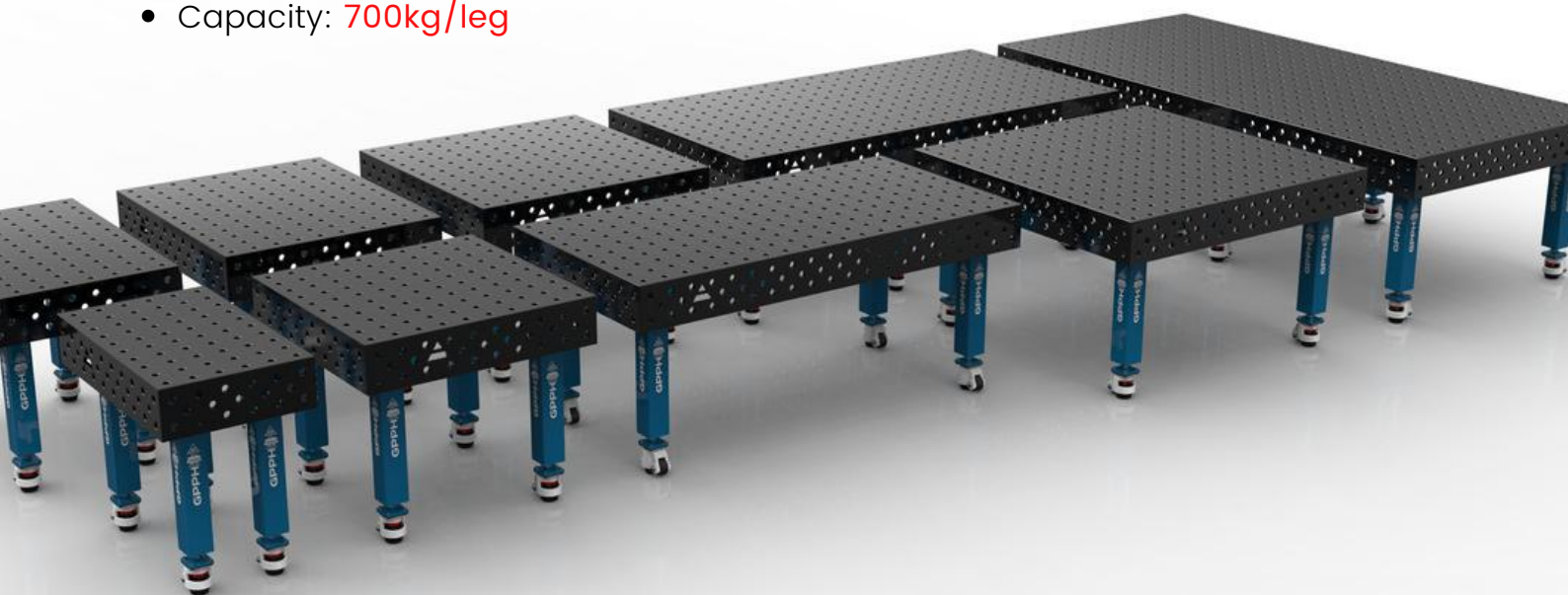


GPPH TRADITIONAL WELDING TABLES^{PRO}



TECHNICAL PARAMETERS

- ✓ Stable and massive construction
- ✓ The highest quality of workmanship
- ✓ Perfect flatness of the table [+/- 0,5mm]
- ✓ Made of S355J2+N
- ✓ Holes of system $\varnothing 16$ or $\varnothing 28$ in the grid 100x100
- ✓ Three grids of holes on the 4 sides
- ✓ Chamfered and milled holes for easy tool assembly
- ✓ Engraved scale in the grid 100x100mm
- ✓ Height adjustment of the table with standard legs approx. 880-930mm
- ✓ Possibility of using stainless steel covers
- ✓ Tables can be combined freely to extend a working surface
- ✓ All tables are reinforced with ribs
- ✓ Produced with standard ISO 2768-1
- ✓ Milled worktop edges
- Thickness **15mm**
- Table legs made of profile **100x100mm**
- Capacity: **700kg/leg**



DIMENSIONS OF TRADITIONAL WELDING TABLES^{PRO}



GPPH TRADITIONAL WELDING TABLE^{PRO} TWT.PRO.300148

- dimension: 3000x1480mm
- side plate: 200mm
- table weight: approx. 980 kg
- capacity: 5 600 kg
- number of legs: 8



GPPH TRADITIONAL WELDING TABLE^{PRO} TWT.PRO.240120

- dimension: 2400x1200mm
- side plate: 200mm
- table weight: approx. 630 kg
- capacity: 4 200 kg
- number of legs: 6



DIMENSIONS OF TRADITIONAL WELDING TABLES^{PRO}



GPPH TRADITIONAL WELDING TABLE^{PRO} TWT.PRO.200100

- dimension: 2000x1000mm
- side plate: 200mm
- table weight: approx. 460 kg
- capacity: 2 800 kg
- number of legs: 4



GPPH TRADITIONAL WELDING TABLE^{PRO} TWT.PRO.150148

- dimension: 1500x1480mm
- side plate: 200mm
- table weight: approx. 460 kg
- capacity: 2 800 kg
- number of legs: 4



DIMENSIONS OF TRADITIONAL WELDING TABLES^{PRO}



GPPH TRADITIONAL WELDING TABLE^{PRO} TWT.PRO.150100

- dimension: 1500x1000mm
- side plate: 200mm
- table weight: approx. 370 kg
- capacity: 2 800 kg
- number of legs: 4



GPPH TRADITIONAL WELDING TABLE^{PRO} TWT.PRO.120120

- dimension: 1200x1200mm
- side plate: 200mm
- table weight: approx. 350 kg
- capacity: 2 800 kg
- number of legs: 4



DIMENSIONS OF TRADITIONAL WELDING TABLES^{PRO}



GPPH TRADITIONAL WELDING TABLE^{PRO} TWT.PRO.120100

- dimension: 1200x1000mm
- side plate: 200mm
- table weight: approx. 320 kg
- capacity: 2 800 kg
- number of legs: 4



GPPH TRADITIONAL WELDING TABLE^{PRO} TWT.PRO.12080

- dimension: 1200x800mm
- side plate: 200mm
- table weight: approx. 270 kg
- capacity: 2 800 kg
- number of legs: 4



DIMENSIONS OF TRADITIONAL WELDING TABLES^{PRO}



GPPH TRADITIONAL WELDING TABLE^{PRO} TWT.PRO.100100

- dimension: 1000x1000mm
- side plate: 200mm
- table weight: approx. 280 kg
- capacity: 2 800 kg
- number of legs: 4



GPPH TRADITIONAL WELDING TABLE^{PRO} TWT.PRO.10060

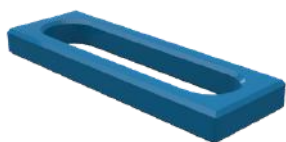
- dimension: 1000x600mm
- side plate: 200mm
- table weight: approx. 210 kg
- capacity: 2 800 kg
- number of legs: 4



TOOLING FOR TRADITIONAL WELDING TABLES^{PRO}



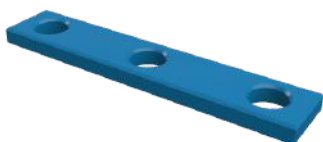
TOOLING FOR TRADITIONAL WELDING TABLES^{PRO}



STOP PRO 150
N.004PRO | Cat. No.



STOP PRO 225
N.005PRO | Cat. No.



STOP PRO 260
N.006PRO | Cat. No.



STOP PRO 500
N.007PRO | Cat. No.



PROTRACTOR PRO
N.008PRO | Cat. No.



**ANGLE PRECISION
SQUARE (FLAT)
PRO 275X150**
N.009PRO | Cat. No.



**ANGLE PRECISION
SQUARE (FLAT)
PRO 320X150**
N.010PRO | Cat. No.



**ANGLE PRECISION
SQUARE (FLAT)
PRO 350X250**
N.011PRO | Cat. No.



**ECCENTRIC STOP
PRO Ø100**
N.003PRO | Cat. No.



TOOLING FOR TRADITIONAL WELDING TABLES^{PRO}



**ANGLE BRACKET
PRO 185X175**
N.012PRO | Cat. No.



**ANGLE BRACKET
PRO 200X200**
N.013PRO | Cat. No.



**ANGLE BRACKET
PRO 300X190**
N.014PRO | Cat. No.



**ANGLE BRACKET
PRO 450X250**
N.015PRO | Cat. No.



**ANGLE BRACKET PRO
275X500X175X100**
N.016PRO | Cat. No.



MOUNTING PIN PRO
T.015PRO | Cat. No.



**FAST ASSEMBLY
BOLT 30 PRO**
N.002PRO | Cat. No.



**FAST ASSEMBLY
BOLT UNI**
N.002UNI | Cat. No.



TOOLING FOR TRADITIONAL WELDING TABLES^{PRO}



TABLE EXTENSION PRO
1000X100

N.017PRO | Cat. No.

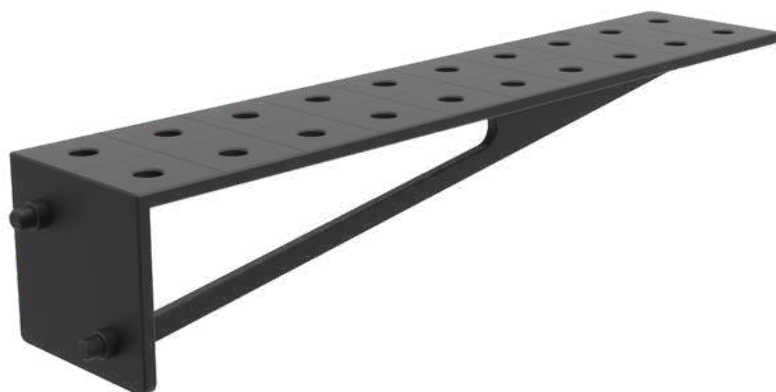
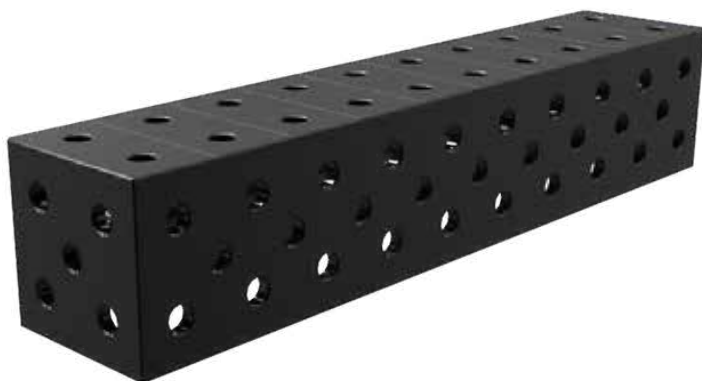


TABLE EXTENSION PRO
1000X200

N.018PRO | Cat. No.

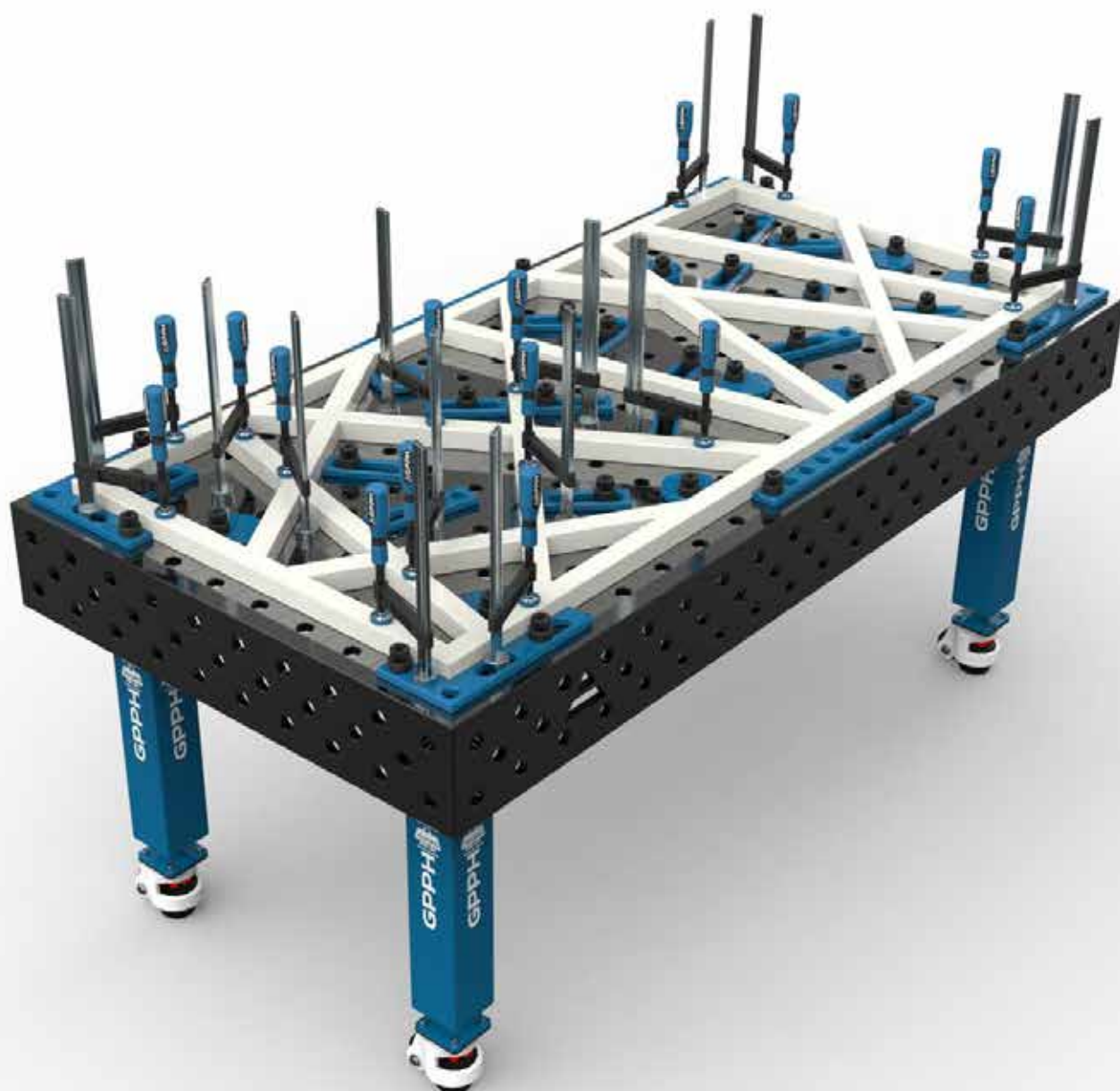


WELDING CONNECTION
BLOCK PRO 1000X200X200

N.019PRO | Cat. No.

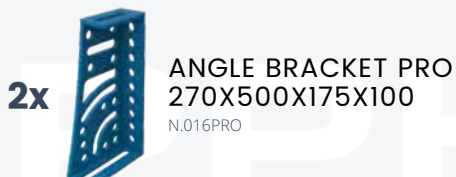
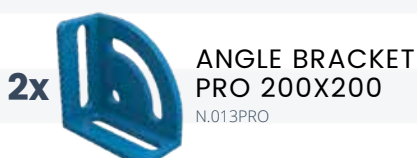
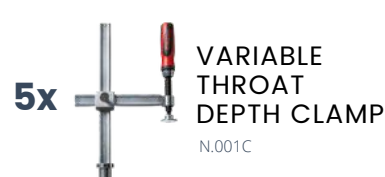
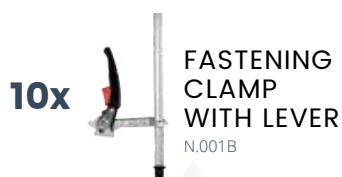


TOOLKIT PROPOSAL **PRO**



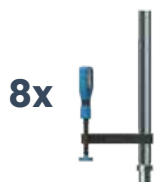
TOOLKIT ^{PRO} NO. 1

Number of jigs & fixtures included in the kit: 146



TOOLKIT ^{PRO} NO. 2

Number of jigs & fixtures included in the kit: 93



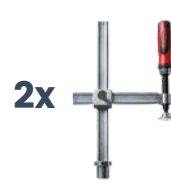
8x

FASTENING CLAMP
N.001A



4x

FASTENING CLAMP WITH LEVER
N.001B



2x

VARIABLE THROAT DEPTH CLAMP
N.001C



2x

VARIABLE THROAT DEPTH WITH LEVER CLAMP
N.001D



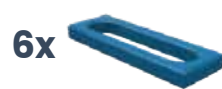
30x

FAST ASSEMBLY BOLT 30 PRO
N.002PRO



6x

ECCENTRIC STOP PRO Ø100
N.003PRO



6x

STOP PRO 150
N.004PRO



4x

STOP PRO 225
N.005PRO



2x

STOP PRO 500
N.007PRO



1x

PROTRACTOR PRO
N.008PRO



4x

ANGLE PRECISION SQUARE (FLAT) PRO 320X150
N.010PRO



2x

ANGLE PRECISION SQUARE (FLAT) PRO 350X250
N.011PRO



4x

ANGLE BRACKET PRO 185X175
N.012PRO



2x

ANGLE BRACKET PRO 200X200
N.013PRO



2x

ANGLE BRACKET PRO 300X190
N.014PRO



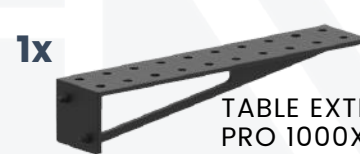
2x

ANGLE BRACKET PRO 450X250
N.015PRO



1x

TABLE EXTENSION PRO 1000X100
N.017PRO



1x

TABLE EXTENSION PRO 1000X200
N.018PRO



4x

PRISM Ø58MM 130°/90°
N.023



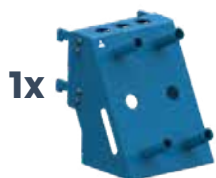
2x

FAST ASSEMBLY BOLT SHELF M
T.011B



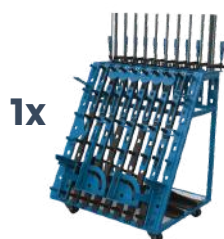
2x

CLAMP SHELF M
T.011D



1x

MIX SHELF
T.011H

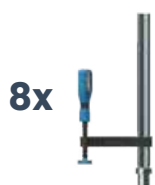


1x

TOOL TROLLEY M / TOOL TROLLEY L (OPTIONS)
T.012AB / T.012A

TOOLKIT^{PRO} NO. 3

Number of jigs & fixtures included in the kit: 58



8x

FASTENING
CLAMP
N.001A



2x

FASTENING
CLAMP
WITH LEVER
N.004PRO



18x

FAST ASSEMBLY
BOLT 30 PRO
N.002PRO



4x

ECCENTRIC
STOP PRO Ø100
N.003PRO



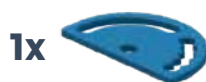
4x

STOP PRO
150
N.004PRO



4x

STOP PRO
225
N.005PRO



1x

PROTRACTOR
PRO
N.008PRO



2x

ANGLE PRECISION
SQUARE (FLAT)
PRO 320X150
N.010PRO



2x

ANGLE PRECISION
SQUARE (FLAT)
PRO 350X250
N.011PRO



4x

ANGLE BRACKET
PRO 185X175
N.012PRO



2x

ANGLE BRACKET
PRO 200X200
N.013PRO



2x

ANGLE BRACKET
PRO 300X190
N.014PRO



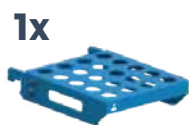
1x

ANGLE BRACKET
PRO 450X250
N.015PRO



2x

PRISM Ø58MM
130°/90°
N.023



1x

FAST ASSEMBLY
BOLT SHELF M
T.011B



1x

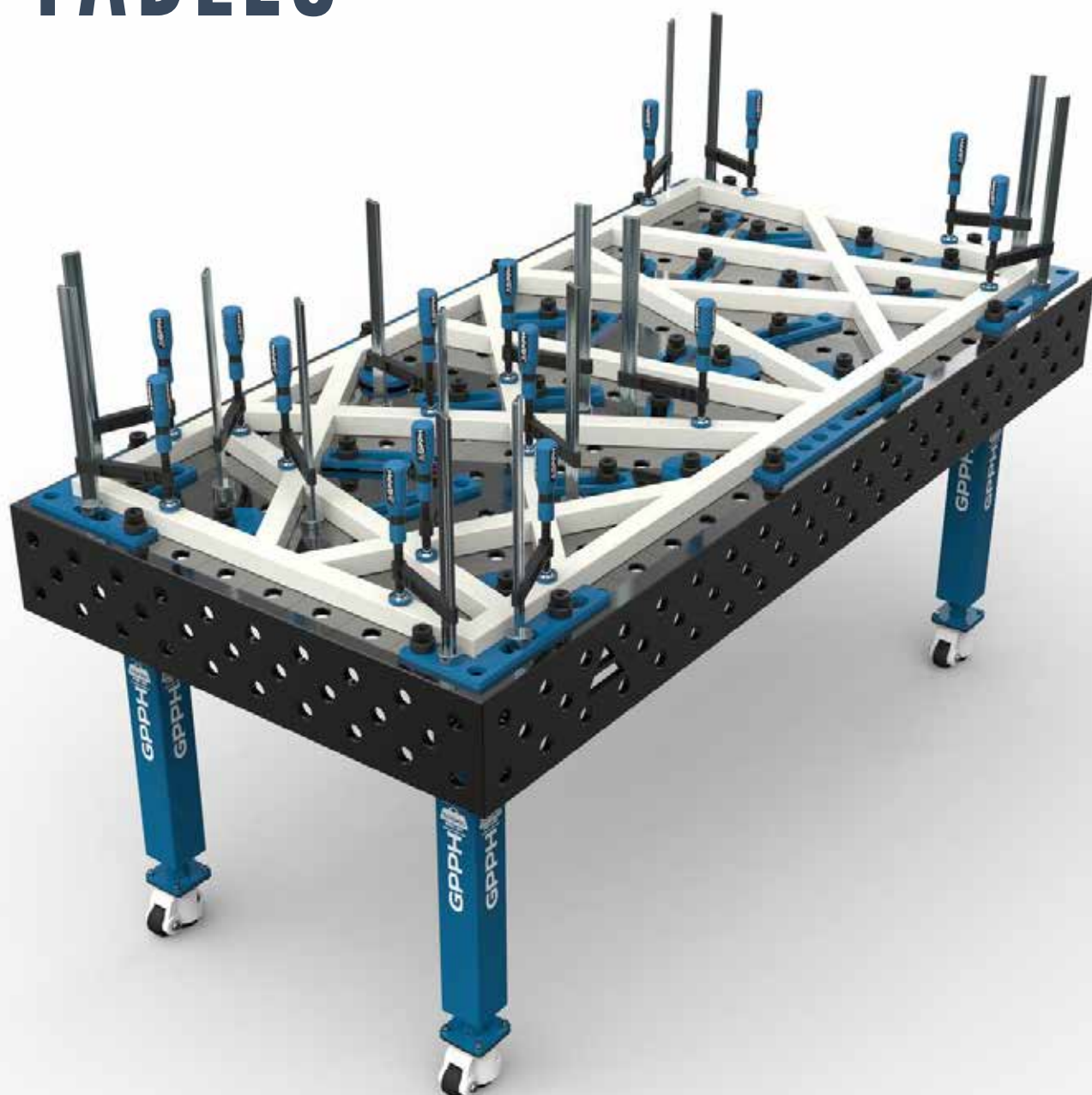
CLAMP SHELF M
T.011D

TOOLKIT^{PRO} NO. 4

Number of jigs & fixtures included in the kit: 26

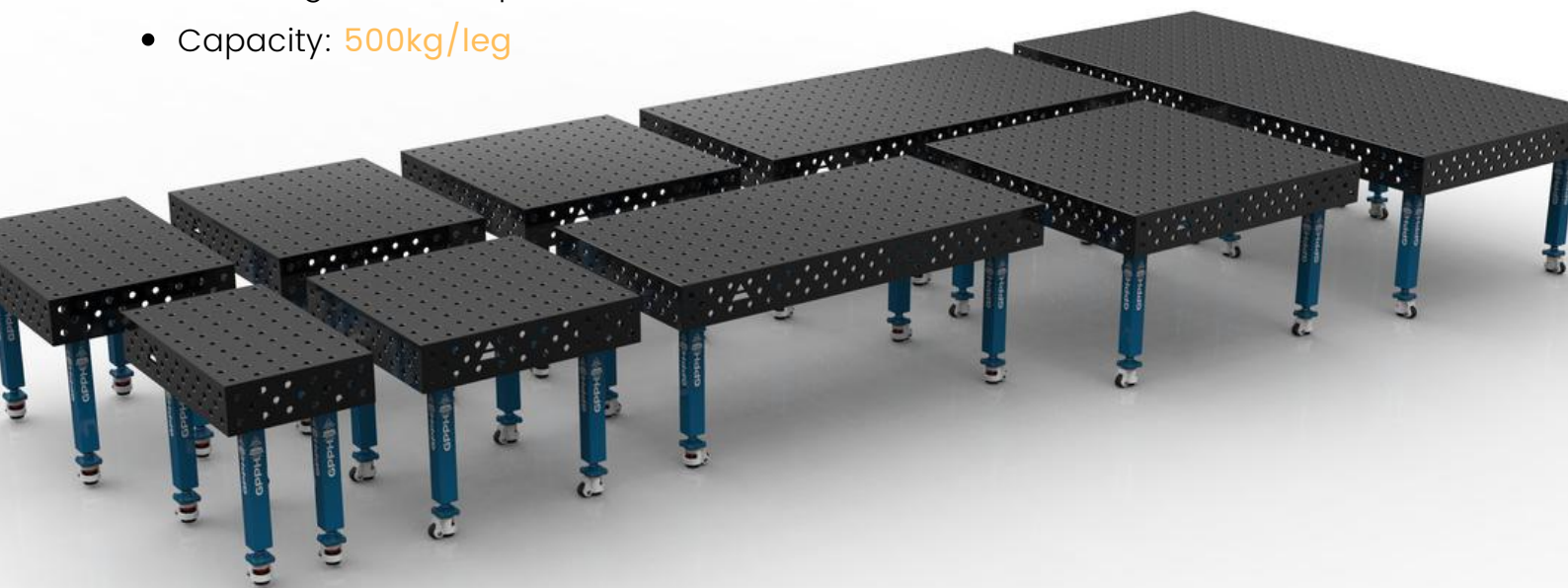


GPPH TRADITIONAL WELDING TABLES **PLUS**



TECHNICAL PARAMETERS

- ✓ Stable and massive construction
- ✓ The highest quality of workmanship
- ✓ Perfect flatness of the table [+/ - 0,5mm]
- ✓ Made of S355J2+N
- ✓ Holes of system $\varnothing 16$ or $\varnothing 28$ in the grid 100x100
- ✓ Three grids of holes on the 4 sides
- ✓ Chamfered and milled holes for easy tool assembly
- ✓ Engraved scale in the grid 100x100mm
- ✓ Height adjustment of the table with standard legs approx. 880-930mm
- ✓ Possibility of using stainless steel covers
- ✓ Tables can be combined freely to extend a working surface
- ✓ All tables are reinforced with ribs
- ✓ Produced with standard ISO 2768-1
- ✓ Milled worktop edges
- Thickness **12mm**
- Table legs made of profile **80x80mm**
- Capacity: **500kg/leg**



DIMENSIONS OF TRADITIONAL WELDING TABLES^{PLUS}



**GPPH TRADITIONAL
WELDING TABLE^{PLUS}**
TWT.PLUS.300148

- dimension: 3000x1480mm
- side plate: 200mm
- table weight: approx. 780 kg
- capacity: 4 000 kg
- number of legs: 8



**GPPH TRADITIONAL
WELDING TABLE^{PLUS}**
TWT.PLUS.240120

- dimension: 2400x1200mm
- side plate: 200mm
- table weight: approx. 510 kg
- capacity: 3 000 kg
- number of legs: 6



DIMENSIONS OF TRADITIONAL WELDING TABLES^{PLUS}



GPPH TRADITIONAL WELDING TABLE^{PLUS} TWT.PLUS.200100

- dimension: 2000x1000mm
- side plate: 200mm
- table weight: approx. 370 kg
- capacity: 2 000 kg
- number of legs: 4



GPPH TRADITIONAL WELDING TABLE^{PLUS} TWT.PLUS.150148

- dimension: 1500x1480mm
- side plate: 200mm
- table weight: approx. 390 kg
- capacity: 2 000 kg
- number of legs: 4



DIMENSIONS OF TRADITIONAL WELDING TABLES^{PLUS}



GPPH TRADITIONAL WELDING TABLE^{PLUS} TWT.PLUS.150100

- dimension: 1500x1000mm
- side plate: 200mm
- table weight: approx. 300 kg
- capacity: 2 000 kg
- number of legs: 4



GPPH TRADITIONAL WELDING TABLE^{PLUS} TWT.PLUS.120120

- dimension: 1200x1200mm
- side plate: 200mm
- table weight: approx. 280 kg
- capacity: 2 000 kg
- number of legs: 4



DIMENSIONS OF TRADITIONAL WELDING TABLES^{PLUS}



GPPH TRADITIONAL WELDING TABLE^{PLUS}
TWT.PLUS.120100

- dimension: 1200x1000mm
- side plate: 200mm
- table weight: approx. 260 kg
- capacity: 2 000 kg
- number of legs: 4



GPPH TRADITIONAL WELDING TABLE^{PLUS}
TWT.PLUS.12080

- dimension: 1200x800mm
- side plate: 200mm
- table weight: approx. 220 kg
- capacity: 2 000 kg
- number of legs: 4



DIMENSIONS OF TRADITIONAL WELDING TABLES^{PLUS}



GPPH TRADITIONAL WELDING TABLE^{PLUS} TWT.PLUS.100100

- dimension: 1000x1000mm
- side plate: 200mm
- table weight: approx. 230 kg
- capacity: 2 000 kg
- number of legs: 4

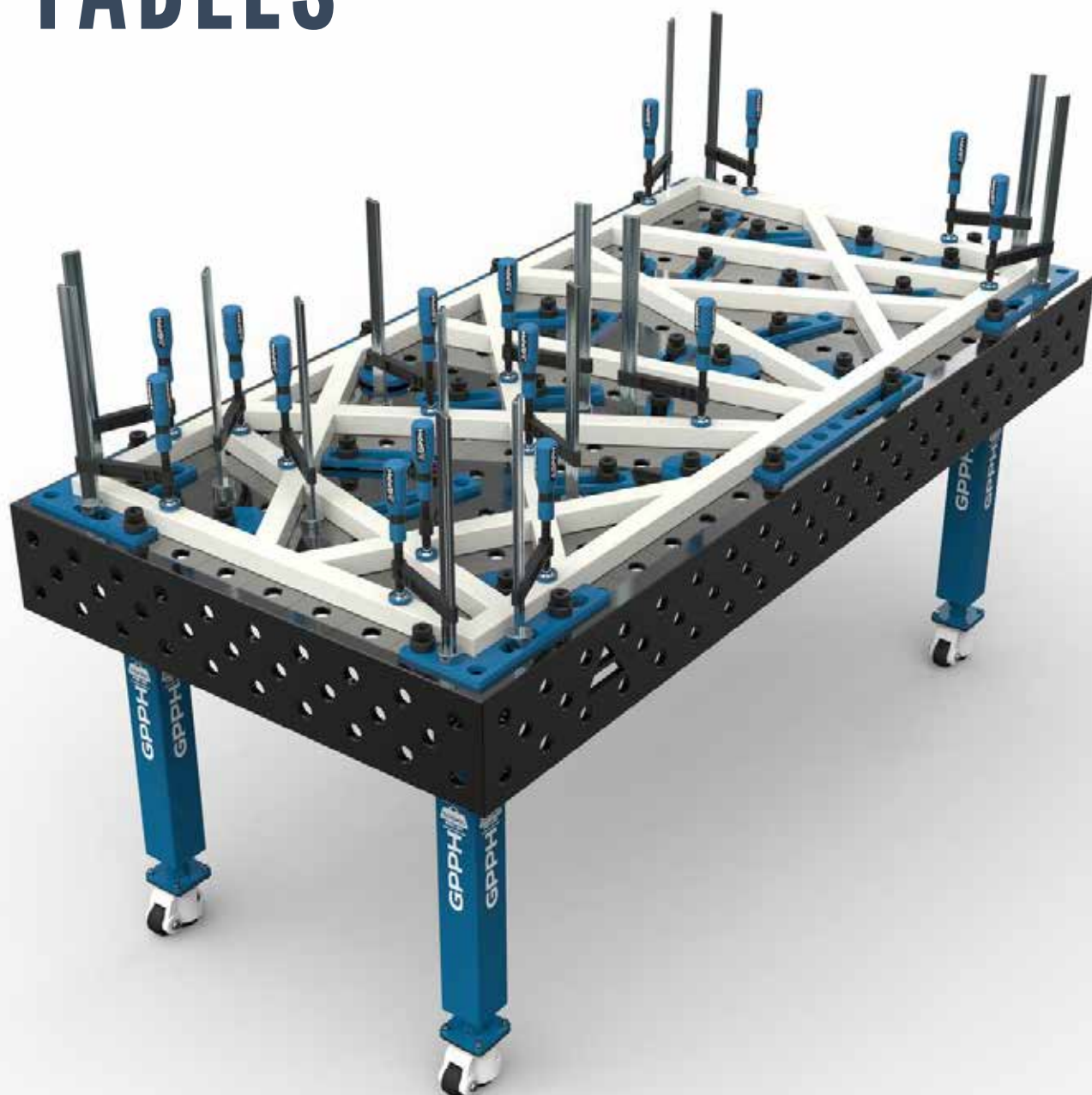


GPPH TRADITIONAL WELDING TABLE^{PLUS} TWT.PLUS.10060

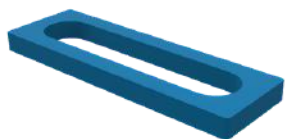
- dimension: 1000x600mm
- side plate: 200mm
- table weight: approx. 170 kg
- capacity: 2 000 kg
- number of legs: 4



TOOLING FOR TRADITIONAL WELDING TABLES **PLUS**



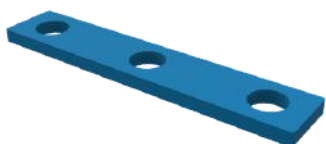
TOOLING FOR TRADITIONAL WELDING TABLES ^{PLUS}



STOP PLUS 150
N.004PLUS | Cat. No.



STOP PLUS 225
N.005PLUS | Cat. No.



STOP PLUS 260
N.006PLUS | Cat. No.



STOP PLUS 500
N.007PLUS | Cat. No.



PROTRACTOR PLUS
N.008PLUS | Cat. No.



**ANGLE PRECISION
SQUARE (FLAT)
PLUS 275X150**
N.009PLUS | Cat. No.



**ANGLE PRECISION
SQUARE (FLAT)
PLUS 320X150**
N.010PLUS | Cat. No.



**ANGLE PRECISION
SQUARE (FLAT)
PLUS 350X250**
N.011PLUS | Cat. No.



**ECCENTRIC STOP
PLUS Ø100**
N.003PLUS | Cat. No.



TOOLING FOR TRADITIONAL WELDING TABLES ^{PLUS}



**ANGLE BRACKET
PLUS 185X175**

N.012PLUS | Cat. No.



**ANGLE BRACKET
PLUS 200X200**

N.013PLUS | Cat. No.



**ANGLE BRACKET
PLUS 300X190**

N.014PLUS | Cat. No.



**ANGLE BRACKET
PLUS 450X250**

N.015PLUS | Cat. No.



**ANGLE BRACKET PLUS
275X500X175X100**

N.016PLUS | Cat. No.



MOUNTING PIN PLUS

T.015PLUS | Cat. No.



**FAST ASSEMBLY
BOLT 23 PLUS**

N.002PLUS | Cat. No.

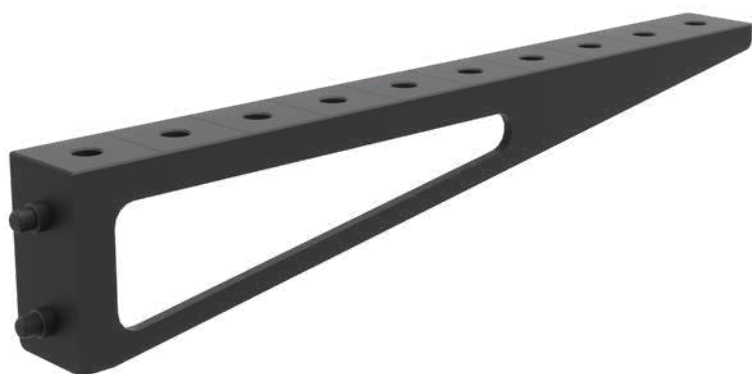


**FAST ASSEMBLY
BOLT UNI**

N.002UNI | Cat. No.



TOOLING FOR TRADITIONAL WELDING TABLES^{PLUS}



**TABLE EXTENSION PLUS
1000X100**

N.017PLUS | Cat. No.



**TABLE EXTENSION PLUS
1000X200**

N.018PLUS | Cat. No.

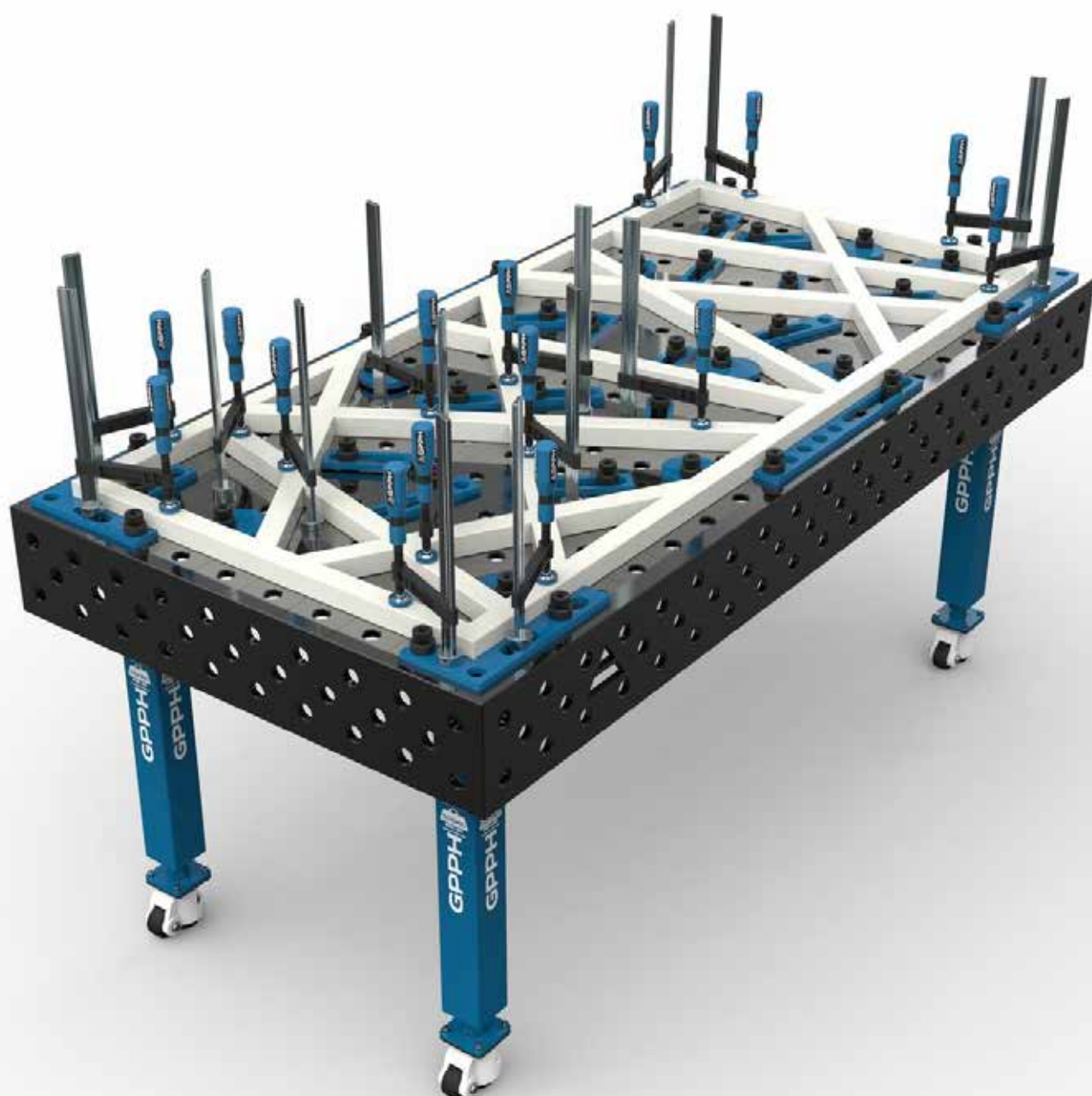


**WELDING CONNECTION
BLOCK PLUS 1000X200X200**

N.019PLUS | Cat. No.

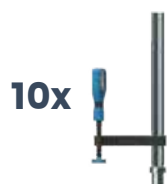


TOOLKIT PROPOSAL PLUS



TOOLKIT^{PLUS} NO. 1

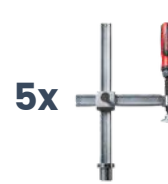
Number of jigs & fixtures included in the kit: 146



10x FASTENING CLAMP
N.001A



10x FASTENING CLAMP WITH LEVER
N.001B



5x VARIABLE THROAT DEPTH CLAMP
N.001C



5x VARIABLE THROAT DEPTH WITH LEVER CLAMP
N.001D



40x FAST ASSEMBLY BOLT 23 PLUS
N.002PLUS



8x ECCENTRIC STOP PLUS Ø100
N.003PLUS



8x STOP PLUS 150
N.004PLUS



4x STOP PLUS 225
N.005PLUS



4x STOP PLUS 500
N.007PLUS



2x PROTRACTOR PLUS
N.008PLUS



4x ANGLE PRECISION SQUARE (FLAT) PLUS 320X150
N.010PLUS



2x ANGLE PRECISION SQUARE (FLAT) PLUS 350X250
N.011PLUS



8x ANGLE BRACKET PLUS 185X175
N.012PLUS



2x ANGLE BRACKET PLUS 200X200
N.013PLUS



4x ANGLE BRACKET PLUS 300X190
N.014PLUS



4x ANGLE BRACKET PLUS 450X250
N.015PLUS



2x ANGLE BRACKET PLUS 270X500X175X100
N.016PLUS



2x TABLE EXTENSION PLUS 1000X100
N.017PLUS



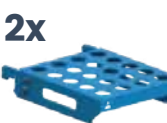
2x TABLE EXTENSION 1000X200
N.018PLUS



1x WELDING TORCH HANDLE
N.020



10x PRISM Ø58MM 130°
N.021



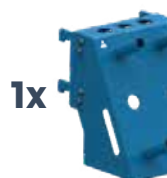
2x FAST ASSEMBLY BOLT SHELF M
T.011B



2x CLAMP SHELF M
T.011D



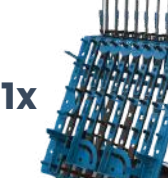
2x FLATSHEF M
T.011F



1x MIX SHELF
T.011H



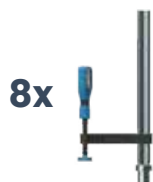
1x DOCUMENTATION SHELF
T.011I



1x TOOL TROLLEY M / TOOL TROLLEY L (OPTIONS)
T.012B / T.012A

TOOLKIT^{PLUS} NO. 2

Number of jigs & fixtures included in the kit: 93



8x FASTENING CLAMP
N.001A



4x FASTENING CLAMP WITH LEVER
N.001B



2x VARIABLE THROAT DEPTH CLAMP
N.001C



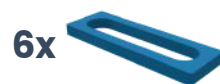
2x VARIABLE THROAT DEPTH WITH LEVER CLAMP
N.001D



30x FAST ASSEMBLY BOLT 23 PLUS
N.002PLUS



6x ECCENTRIC STOP PLUS Ø100
N.003PLUS



6x STOP PLUS 150
N.004PLUS



4x STOP PLUS 225
N.005PLUS



2x STOP PLUS 500
N.007PLUS



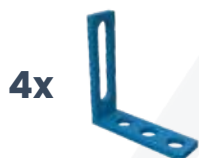
1x PROTRACTOR PLUS
N.008PLUS



4x ANGLE PRECISION SQUARE (FLAT) PLUS 320X150
N.010PLUS



2x ANGLE PRECISION SQUARE (FLAT) PLUS 350X250
N.011PLUS



4x ANGLE BRACKET PLUS 185X175
N.012PLUS



2x ANGLE BRACKET PLUS 200X200
N.013PLUS



2x ANGLE BRACKET PLUS 300X190
N.014PLUS



2x ANGLE BRACKET PLUS 450X250
N.015PLUS



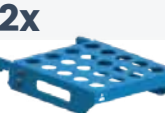
1x TABLE EXTENSION PLUS 1000X100
N.017PLUS



1x TABLE EXTENSION PLUS 1000X200
N.018PLUS



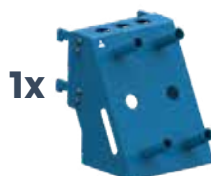
4x PRISM Ø58MM 130°/90°
N.023



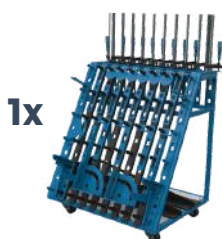
2x FAST ASSEMBLY BOLT SHELF M
T.011B



2x CLAMP SHELF M
T.011D



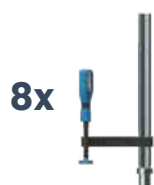
1x MIX SHELF
T.011H



1x TOOL TROLLEY M / TOOL TROLLEY L (OPTIONS)
T.012B / T.012A

TOOLKIT^{PLUS} NO. 3

Number of jigs & fixtures included in the kit: 58



8x

FASTENING
CLAMP
N.001A



2x

FASTENING
CLAMP
WITH LEVER
N.001B



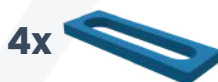
18x

FAST ASSEMBLY
BOLT 23 PLUS
N.002PLUS



4x

ECCENTRIC STOP
PLUS Ø100
N.003PLUS



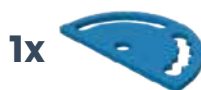
4x

STOP PLUS
150
N.004PLUS



4x

STOP PLUS
225
N.005PLUS



1x

PROTRACTOR
PLUS
N.008PLUS



2x

ANGLE PRECISION
SQUARE (FLAT)
PLUS 320X150
N.010PLUS



2x

ANGLE PRECISION
SQUARE (FLAT)
PLUS 350X250
N.011PLUS



4x

ANGLE BRACKET
PLUS 185X175
N.012PLUS



2x

ANGLE BRACKET
PLUS 200X200
N.013PLUS



2x

ANGLE BRACKET
PLUS 300X190
N.014PLUS



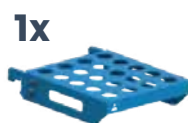
1x

ANGLE BRACKET
PLUS 450X250
N.015PLUS



2x

PRISM Ø58MM
130°/90°
N.023



1x

FAST ASSEMBLY
BOLT SHELF M
T.011B

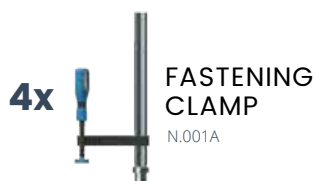


1x

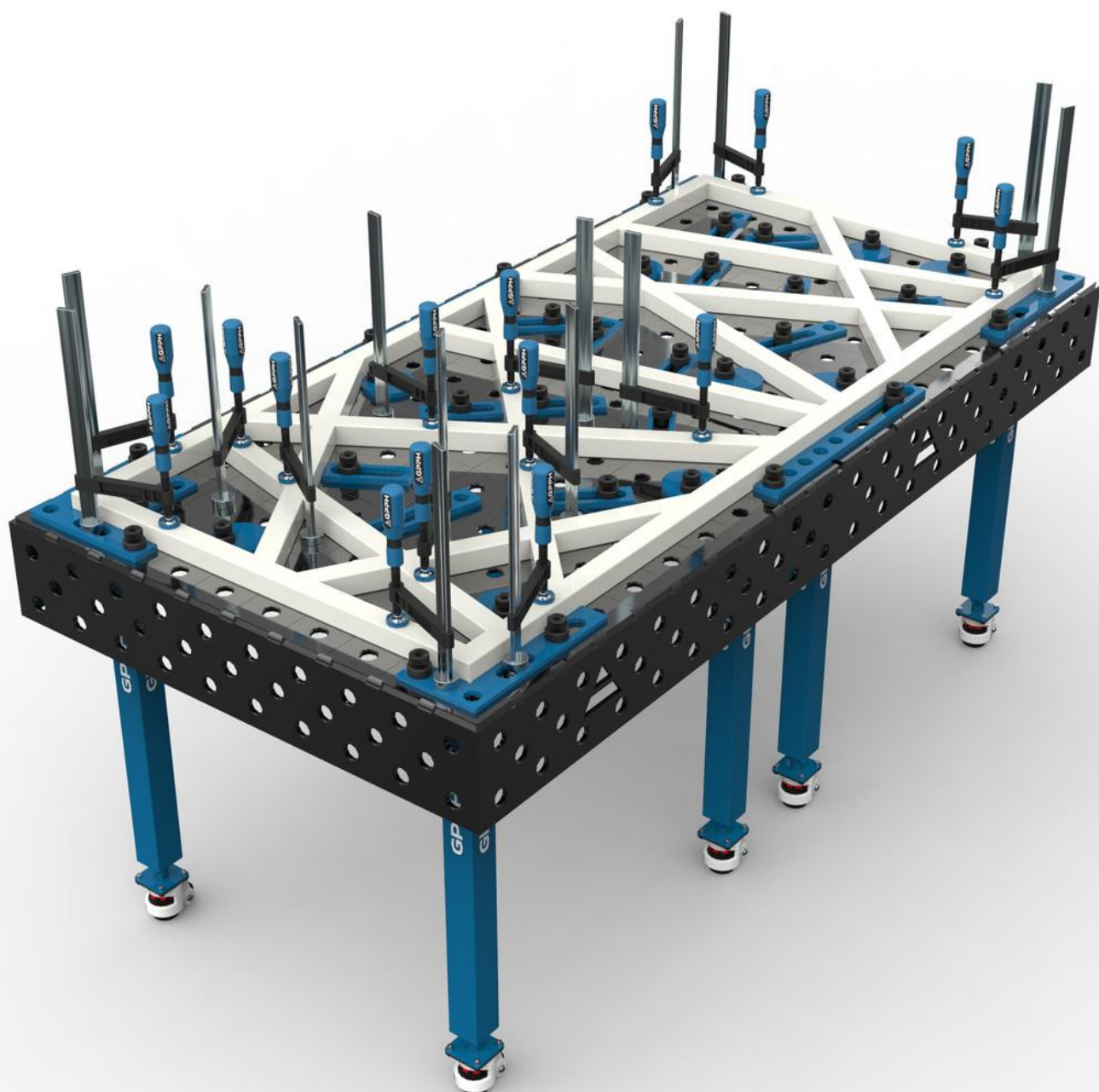
CLAMP SHELF M
T.011D

TOOLKIT^{PLUS} NO. 4

Number of jigs & fixtures included in the kit: 26

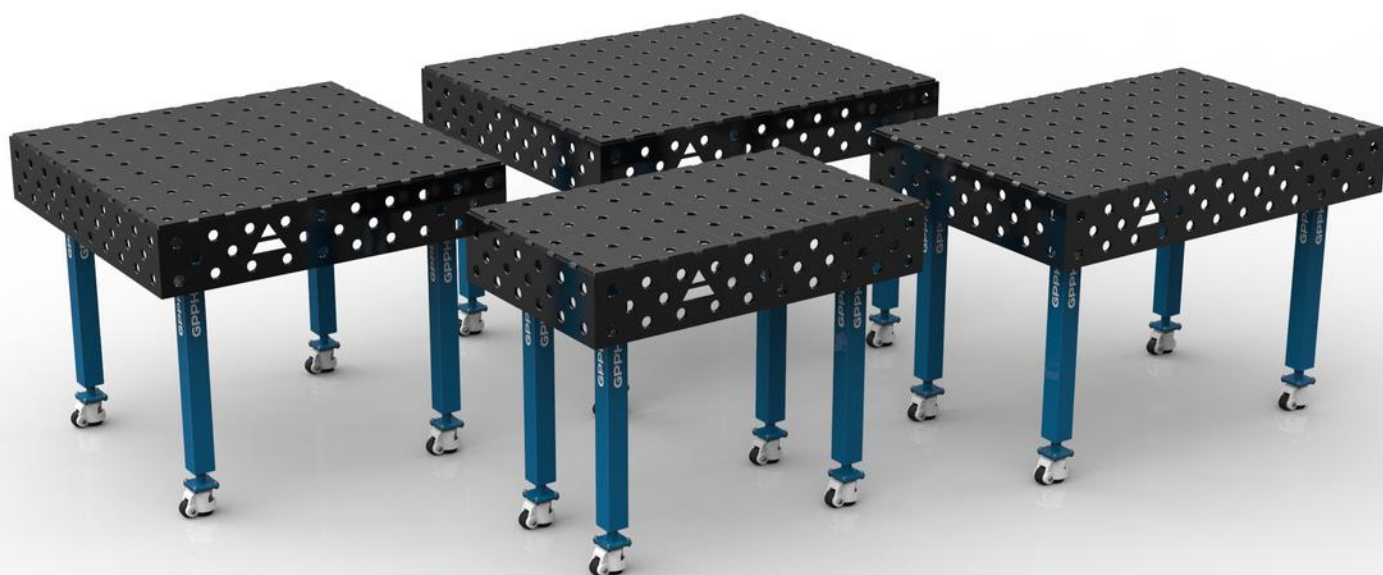


GPPH TRADITIONAL WELDING TABLES^{ECO}



TECHNICAL PARAMETERS

- ✓ Stable and massive construction
- ✓ The highest quality of workmanship
- ✓ Perfect flatness of the table [+ / - 0,5mm]
- ✓ Made of S355J2+N
- ✓ Holes of system $\varnothing 16$ or $\varnothing 28$ in the grid 100x100
- ✓ Three grids of holes on the 4 sides
- ✗ Chamfered and milled holes to facilitate the assembly of tools (holes in the basic ECO version are laser cut)
- ✓ Engraved scale in the grid 100x100mm
- ✓ Height adjustment of the table with standard legs approx. 880–930mm Possibility of
- ✓ using stainless steel covers
- ✓ Tables can be combined freely to extend a working surface
- ✓ All tables are reinforced with ribs
- ✓ Produced with standard ISO 2768–1
- ✗ Milled worktop edges
 - Thickness **8mm**
 - Table legs made of profile **60x60mm**
 - Capacity: **250kg/leg**



DIMENSIONS OF TRADITIONAL WELDING TABLES^{ECO}

More dimensions available.
Contact Vamatec for more information.



GPPH TRADITIONAL WELDING TABLE^{ECO} TWT.ECO.120100

- dimension: 1200x1000mm
- side plate: 190mm
- table weight: approx. 170 kg
- capacity: 1 000 kg
- number of legs: 4



GPPH TRADITIONAL WELDING TABLE^{ECO} TWT.ECO.12080

- dimension: 1200x800mm
- side plate: 190mm
- table weight: approx. 140 kg
- capacity: 1 000 kg
- number of legs: 4



DIMENSIONS OF TRADITIONAL WELDING TABLES^{ECO}



**GPPH TRADITIONAL
WELDING TABLE^{ECO}**
TWT.ECO.100100

- dimension: 1000x1000mm
- side plate: 190mm
- table weight: approx. 150 kg
- capacity: 1 000 kg
- number of legs: 4

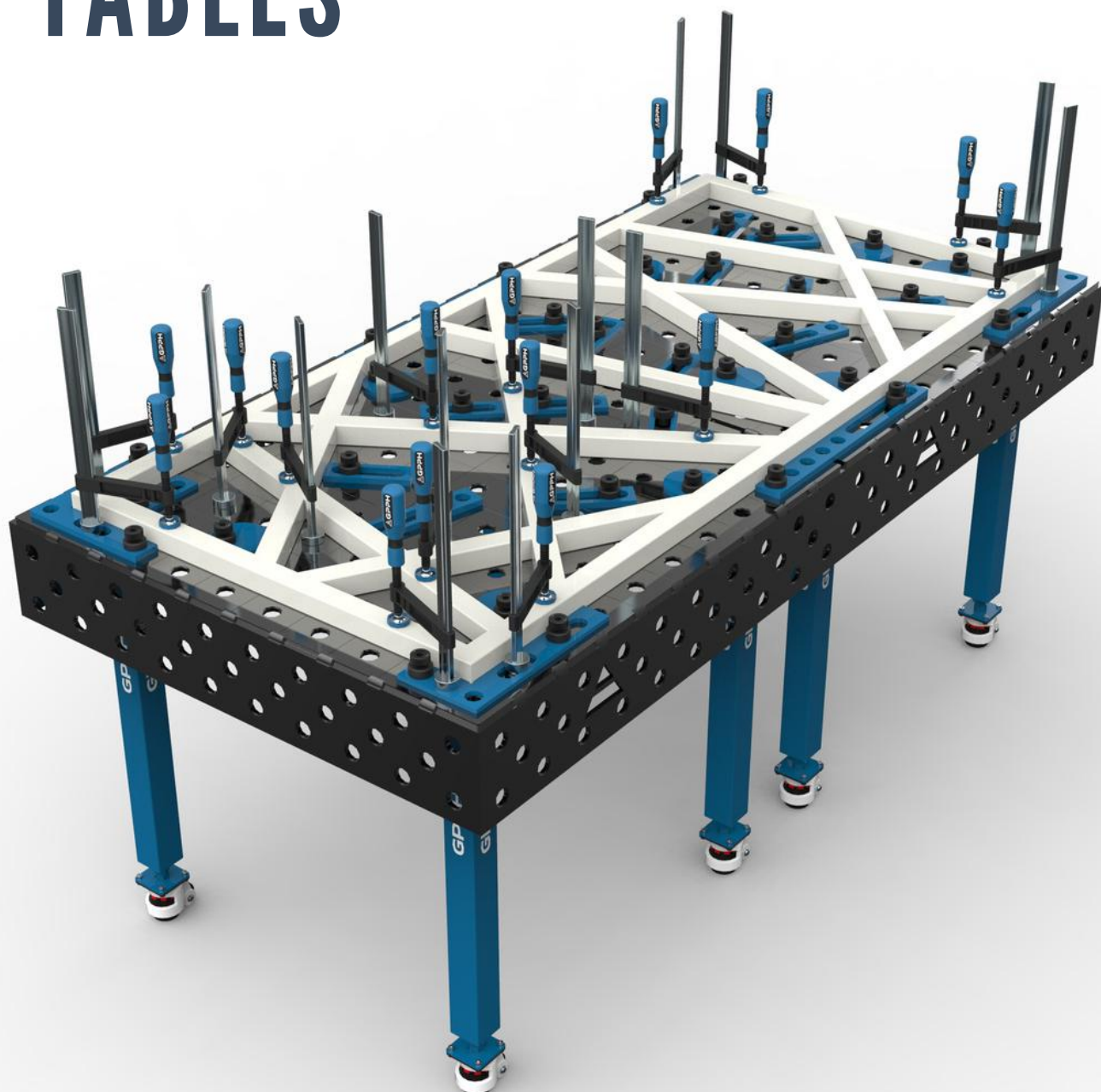


**GPPH TRADITIONAL
WELDING TABLE^{ECO}**
TWT.ECO.10060

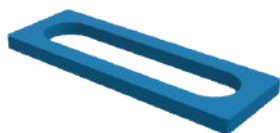
- dimension: 1000x600mm
- side plate: 190mm
- table weight: approx. 110 kg
- capacity: 1 000 kg
- number of legs: 4



TOOLING FOR TRADITIONAL WELDING TABLES^{ECO}



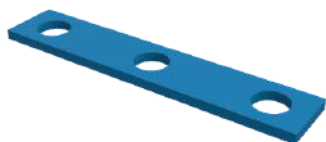
TOOLING FOR TRADITIONAL WELDING TABLES^{ECO}



STOP ECO 150
N.004ECO | Cat. No.



STOP ECO 225
N.005ECO | Cat. No.



STOP ECO 260
N.006ECO | Cat. No.



STOP ECO 500
N.007ECO | Cat. No.



PROTRACTOR ECO
N.008ECO | Cat. No.



**ANGLE PRECISION
SQUARE (FLAT)
ECO 275X150**
N.009ECO | Cat. No.



**ANGLE PRECISION
SQUARE (FLAT)
ECO 320X150**
N.010ECO | Cat. No.



**ANGLE PRECISION
SQUARE (FLAT)
ECO 350X250**
N.011ECO | Cat. No.



**ECCENTRIC STOP
ECO Ø100**
N.003ECO | Cat. No.



TOOLING FOR TRADITIONAL WELDING TABLES^{ECO}



**ANGLE BRACKET
ECO 185X175**
N.012ECO | Cat. No.



**ANGLE BRACKET
200X200**
N.013ECO | Cat. No.



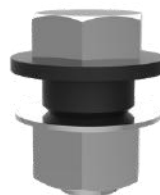
**ANGLE BRACKET
ECO 300X190**
N.014ECO | Cat. No.



**ANGLE BRACKET
ECO 450X250**
N.015ECO | Cat. No.



**ANGLE BRACKET ECO
275X500X175X100**
N.016ECO | Cat. No.



MOUNTING PIN ECO
T.015ECO | Cat. No.



**FAST ASSEMBLY
BOLT ECO**
N.002ECO | Cat. No.



**FAST ASSEMBLY
BOLT UNI**
N.002UNI | Cat. No.



TOOLING FOR TRADITIONAL WELDING TABLES^{ECO}

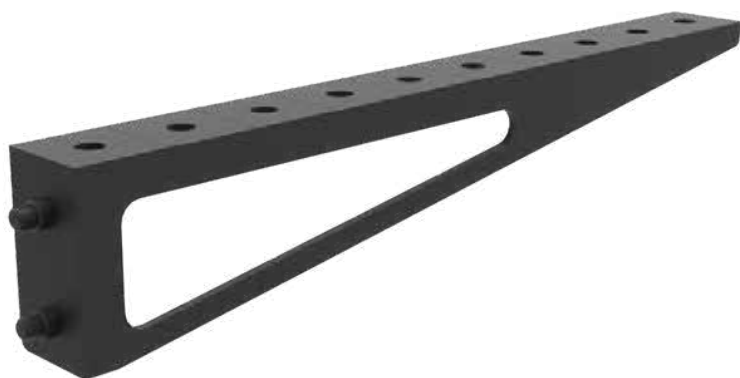


TABLE EXTENSION ECO

1000X100

N.017ECO | Cat. No.

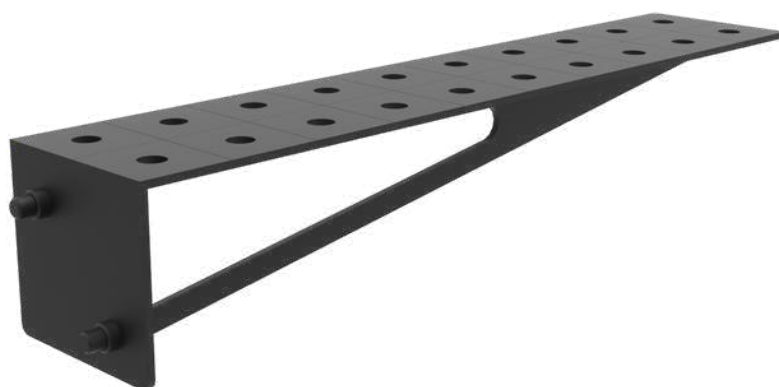
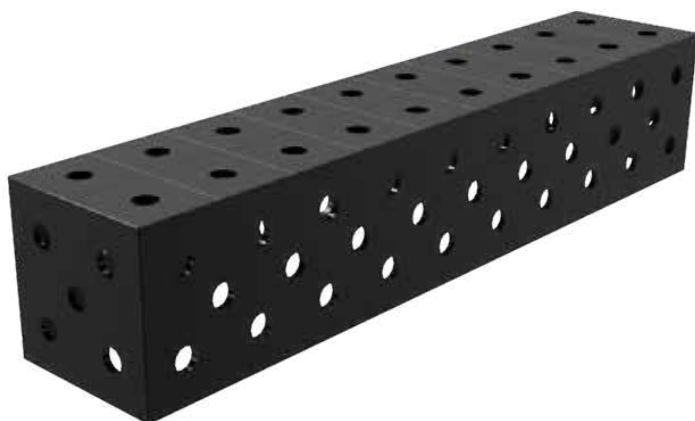


TABLE EXTENSION ECO

1000X200

N.018ECO | Cat. No.



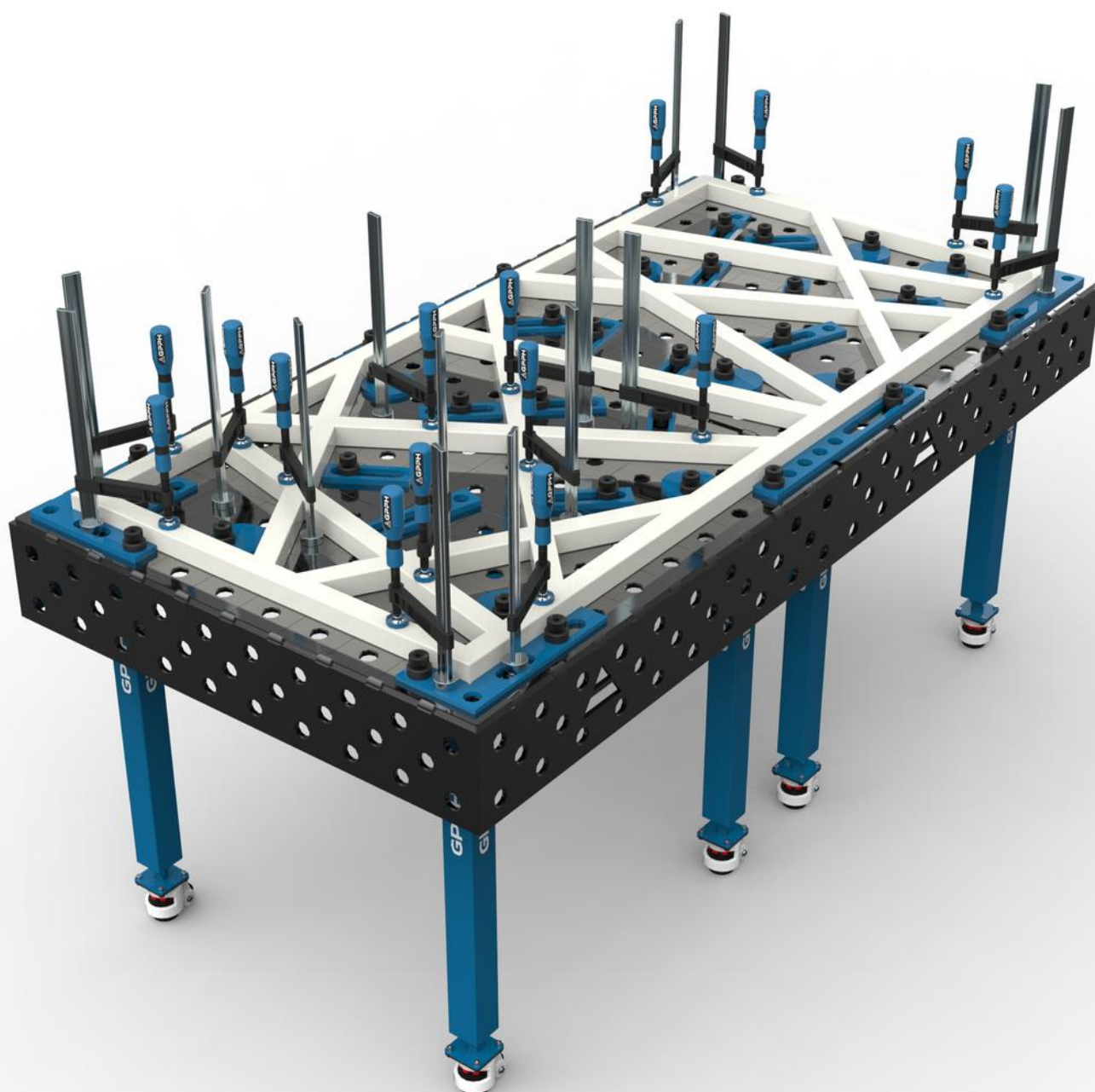
WELDING CONNECTION

BLOCK ECO 1000X200X200

N.019ECO | Cat. No.

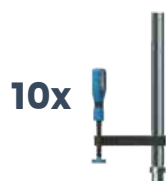


TOOLKIT PROPOSAL **ECO**



TOOLKIT^{ECO} NO. 1

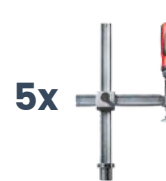
Number of jigs & fixtures included in the kit: 146



10x FASTENING CLAMP
N.001A



10x FASTENING CLAMP WITH LEVER
N.001B



5x VARIABLE THROAT DEPTH CLAMP
N.001C



5x VARIABLE THROAT DEPTH WITH LEVER CLAMP
N.001D



40x FAST ASSEMBLY BOLT ECO 16
N.002ECO



8x ECCENTRIC STOP ECO Ø100
N.003ECO



8x STOP ECO 150
N.004ECO



4x STOP ECO 225
N.005ECO



4x STOP ECO 500
N.007ECO



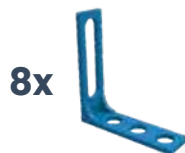
2x PROTRACTOR ECO
N.008ECO



4x ANGLE PRECISION SQUARE (FLAT) ECO 320X150
N.010ECO



2x ANGLE PRECISION SQUARE (FLAT) ECO 350X250
N.011ECO



8x ANGLE BRACKET ECO 185X175
N.012ECO



2x ANGLE BRACKET ECO 200X200
N.013ECO



4x ANGLE BRACKET ECO 300X190
N.014ECO



4x ANGLE BRACKET ECO 450X250
N.015ECO



2x ANGLE BRACKET ECO 270X500X175X100
N.016ECO



2x TABLE EXTENSION ECO 1000X100
N.017ECO



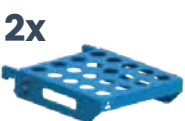
2x TABLE EXTENSION ECO 1000X200
N.018ECO



1x WELDING TORCH HANDLE
N.020



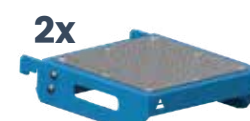
10x PRISM Ø58MM 130°
N.021



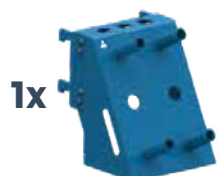
2x FAST ASSEMBLY BOLT SHELF M
T.011B



2x CLAMP SHELF M
T.011D



2x FLAT SHELF M
T.011F



1x MIX SHELF
T.011H



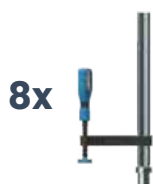
1x DOCUMENTATION SHELF
T.011I



1x TOOL TROLLEY M / TOOL TROLLEY L (OPTIONS)
T.012B / T.012A

TOOLKIT^{ECO} NO. 2

Number of jigs & fixtures included in the kit: 93



8x

FASTENING
CLAMP

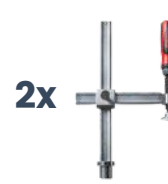
N.001A



4x

FASTENING
CLAMP
WITH LEVER

N.001B



2x

VARIABLE
THROAT
DEPTH CLAMP

N.001C



2x

VARIABLE
THROAT DEPTH
WITH LEVER
CLAMP

N.001D



30x

FAST ASSEMBLY
BOLT ECO 16

N.002ECO



6x

ECCENTRIC STOP
ECO Ø100

N.003ECO



6x

STOP ECO
150

N.004ECO



4x

STOP ECO
225

N.005ECO



2x

STOP ECO
500

N.007ECO



1x

PROTRACTOR
ECO

N.008ECO



4x

ANGLE PRECISION
SQUARE (FLAT)
ECO 320X150

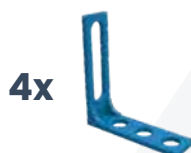
N.010ECO



2x

ANGLE PRECISION
SQUARE (FLAT)
ECO 350X250

N.011ECO



4x

ANGLE BRACKET
ECO 185X175

N.012ECO



2x

ANGLE BRACKET
ECO 200X200

N.013ECO



2x

ANGLE BRACKET
ECO 300X190

N.014ECO



2x

ANGLE BRACKET
ECO 450X250

N.015ECO



1x

TABLE EXTENSION
ECO 1000X100

N.017ECO



1x

TABLE EXTENSION
ECO 1000X200

N.018ECO



4x

PRISM Ø58MM
130°/90°

N.023



2x

FAST ASSEMBLY
BOLT SHELF M

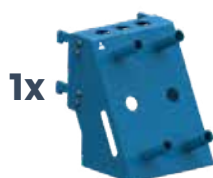
T.011B



2x

CLAMP SHELF M

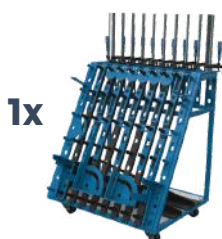
T.011D



1x

MIX SHELF

T.011H



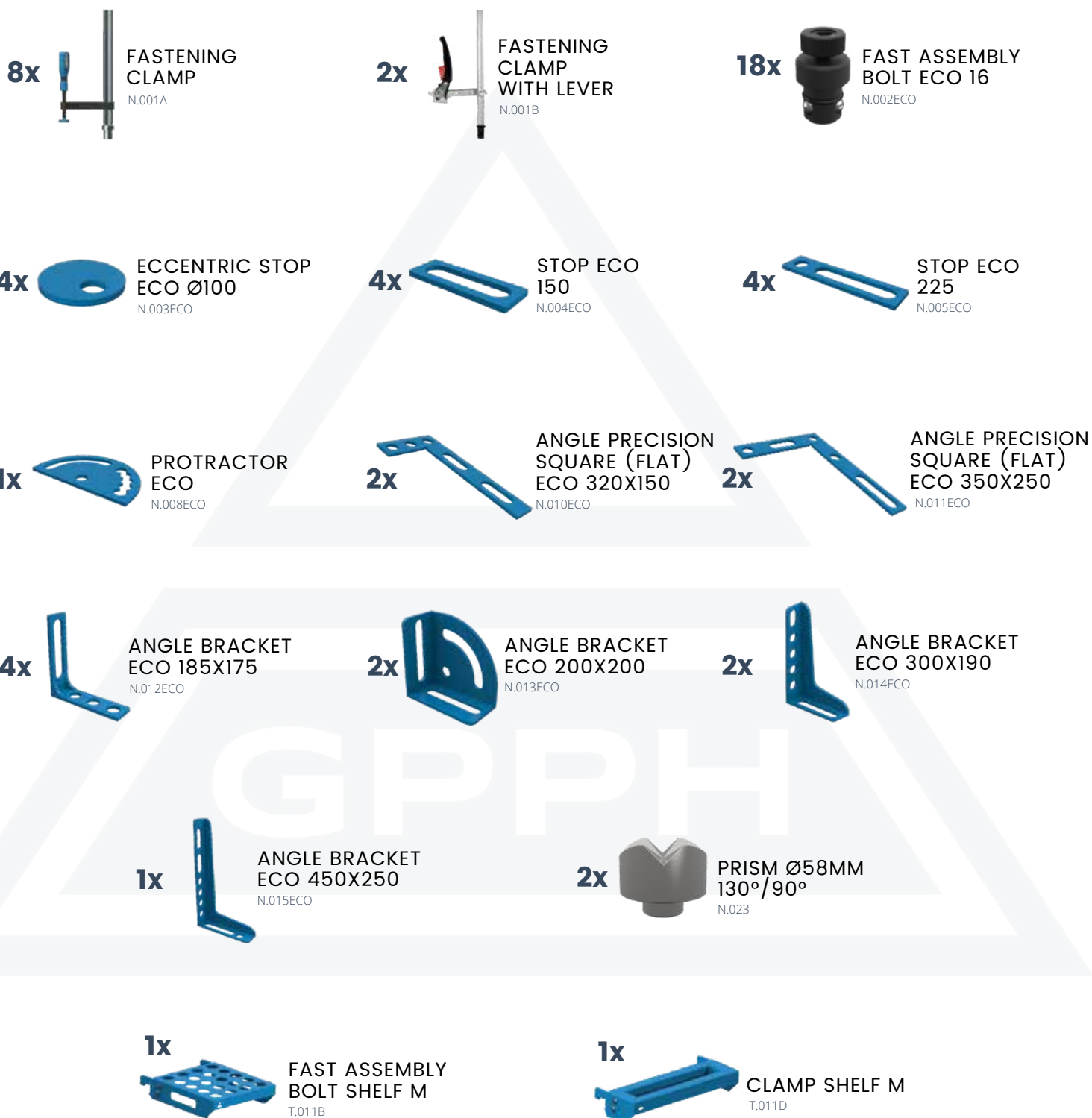
1x

TOOL TROLLEY M /
TOOL TROLLEY L
(OPTIONS)

T.012B / T.012A

TOOLKIT^{ECO} NO. 3

Number of jigs & fixtures included in the kit: 58



TOOLKIT^{ECO} NO. 4

Number of jigs & fixtures included in the kit: 26



NEED MORE MOBILITY OF YOUR WELDING TABLE?

CHECK OUT OUR OFFER OF WELDING TABLES
ON LEGS WITH WHEELS!



Version PRO

Version PLUS

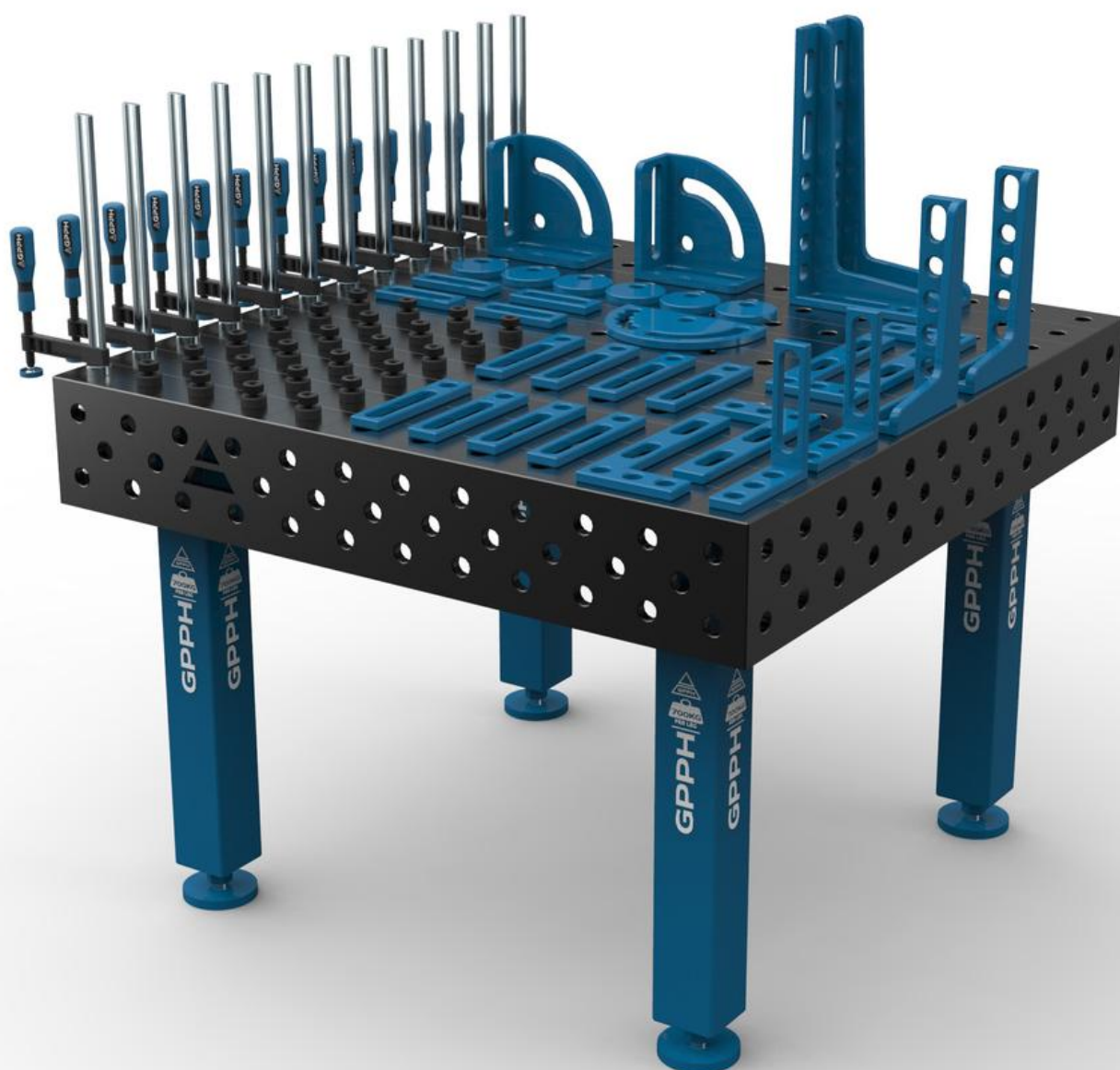
Version ECO



Van Maele Benelux NV/SA - Tenhovestraat 22 - 8700 Tielt - 0032 (0) 51/42.78.00

info@vanmaelebenelux.be - vanmaelebenelux.be

ADDITIONAL EQUIPMENT FOR GPPH WELDING TABLES



ADDITIONAL EQUIPMENT



FASTENING CLAMP
N.001A | Cat. No.



**FASTENING CLAMP
WITH LEVER**
N.001B | Cat. No.



**VARIABLE THROAT
DEPTH CLAMP**
N.001C | Cat. No.



**VARIABLE THROAT
DEPTH WITH
LEVER CLAMP**
N.001D | Cat. No.



FASTENING CLAMP
N.001E | Cat. No.



**FASTENING CLAMP
WITH LEVER**
N.001F | Cat. No.



ADDITIONAL EQUIPMENT



**BESSEY SCREW CLAMP
(WORKING RANGE
200MM)**

N.001G | Cat. No.



**BESSEY SCREW CLAMP
(WORKING RANGE
300MM)**

N.001H | Cat. No.



**BESSEY SCREW CLAMP
(WORKING RANGE
600MM)**

N.001I | Cat. No.



**BESSEY LEVER CLAMP
(WORKING RANGE
200MM)**

N.001J | Cat. No.



**BESSEY LEVER CLAMP
(WORKING RANGE
300MM)**

N.001K | Cat. No.



**BESSEY HIGH-PERFORMANCE
SCREW CLAMP (WORKING
RANGE 300MM)**

N.001L | Cat. No.



ADDITIONAL EQUIPMENT



**BESSEY HIGH-PERFORMANCE
SCREW CLAMP (WORKING
RANGE 500MM)**

N.001M | Cat. No.



**BESSEY CLAMPING ELEMENT
FOR WELDING TABLES WITH
SPECIALS PRESSURE PLATE**

N.001N | Cat. No.



**BESSEY CLAMPING ELEMENT
FOR WELDING TABLES WITH
GRIPPING ARM**

N.001O | Cat. No.



**VERTICAL
CLAMP WITH OPEN
ARM 330/A**

N.001P | Cat. No.



**VERTICAL
CLAMP WITH OPEN
ARM 230/A**

N.001R | Cat. No.



**BESSEY TILTING
ADAPTER**

N.001S | Cat. No.



ADDITIONAL EQUIPMENT



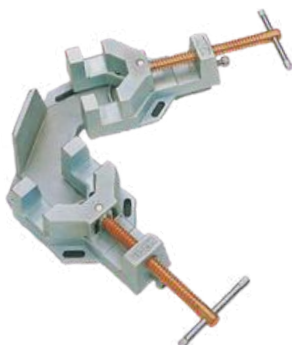
**BESSEY WELDING ANGLE
CLAMP (WORKING
RANGE 2X90MM)**

N.024A | Cat. No.



**BESSEY WELDING ANGLE
CLAMP (WORKING RANGE
2X120MM)**

N.024B | Cat. No.



**BESSEY WELDING
CLAMP SET**

N.024C | Cat. No.



**PRISM
Ø58mm 130°**

N.021 | Cat. No.



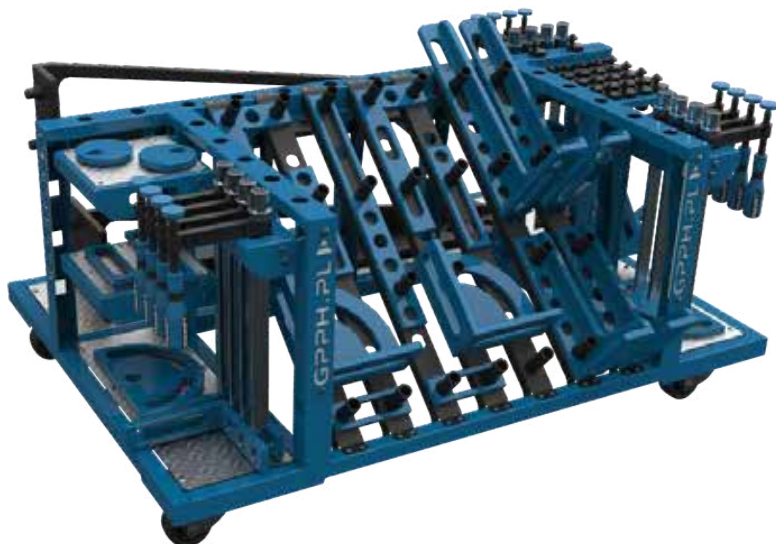
**PRISM
Ø58mm 130°/ 90°**

N.023 | Cat. No.



ORDER DOES MATTER

GPPH TOOL TROLLEY



One of the many advantages of the small tool trolley is that it fits under most dimensions of GPPH Welding Tables. You have all the tools at your fingertips while working!

T.012B | Cat. No.

The large GPPH tool trolley will accommodate a set of tools even for the most demanding user! Thanks to it, your workplace will become transparent like never before, and GPPH tools will be clearly arranged and more accessible.

T.012A | Cat. No.

